



**MALMET (AUSTRALIA)
PTY LTD**

Head Office and Customer Service
ABN 95 001 717 791

9-11 McKay Avenue
PO Box 373
Leeton NSW 2705

Phone: +61 2 6953 7677
Email: info@malmet.com.au

Bedpan/Urinal Bottle and Utensil/Bowl Washer Disinfector

Models WDS1; WDS3



Spare Parts Catalogue

*Note: Due to Malmet's Policy of continuous product improvement;
design and technical specifications are subject to change without notice.*



Table of Contents

| | |
|---|---|
| <i>Layout – Front View</i> | 2 |
| <i>Layout – LH Side View</i> | 3 |
| <i>Layout – RH Side View</i> | 4 |
| <i>Layout – Rear View</i> | 5 |
| <i>Layout – Top View</i> | 6 |
| <i>Layout – Inside Door View</i> | 7 |
| <i>Control Panel – Front View</i> | 8 |
| <i>Spare Parts</i> | 9 |

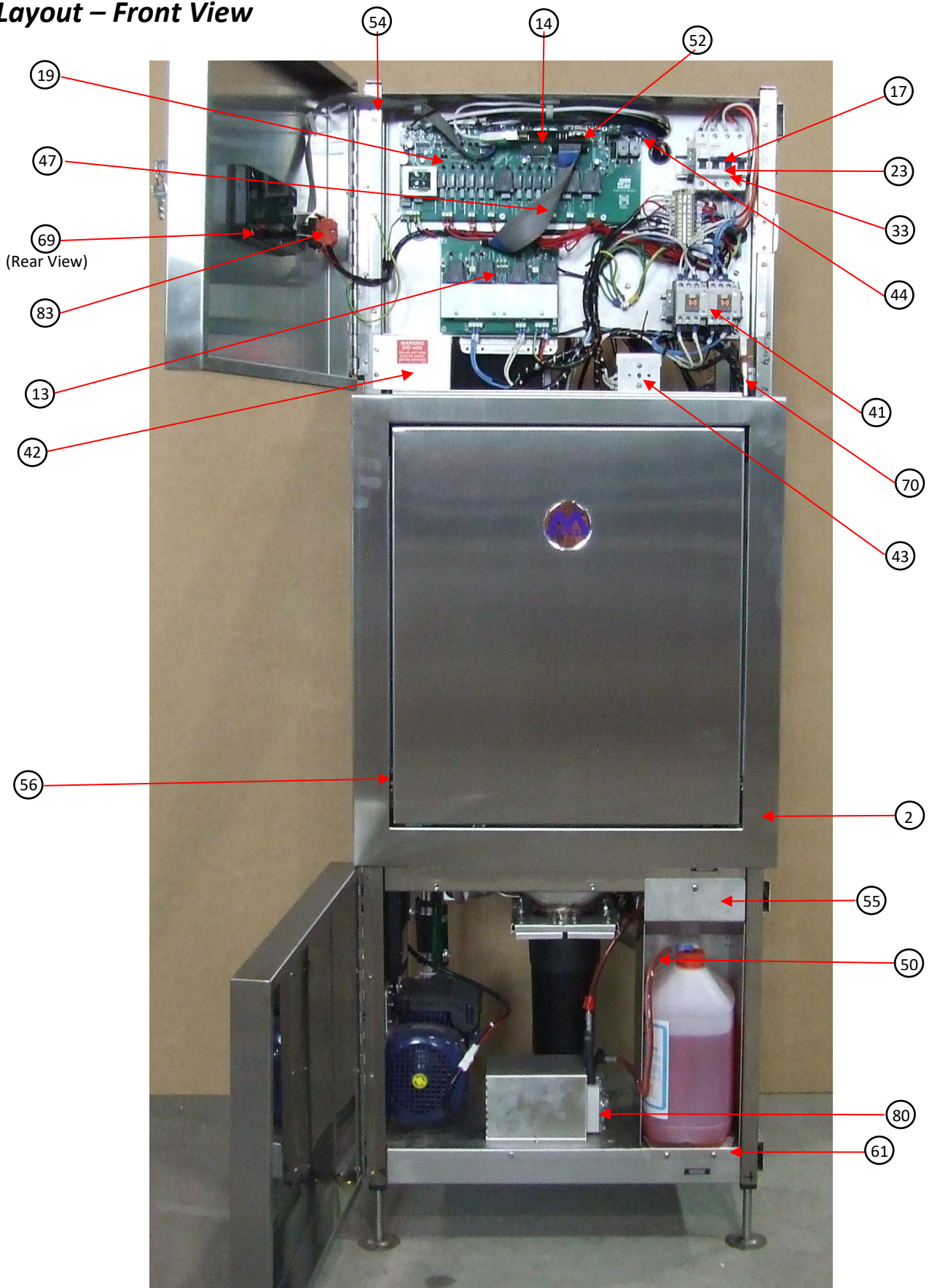
Note: *Not all parts listed in this catalogue are displayed on the Layout views.*

In the interest of continued product improvement, MALMET (AUSTRALIA) reserves the right to alter specifications without notice. E. & O. E.

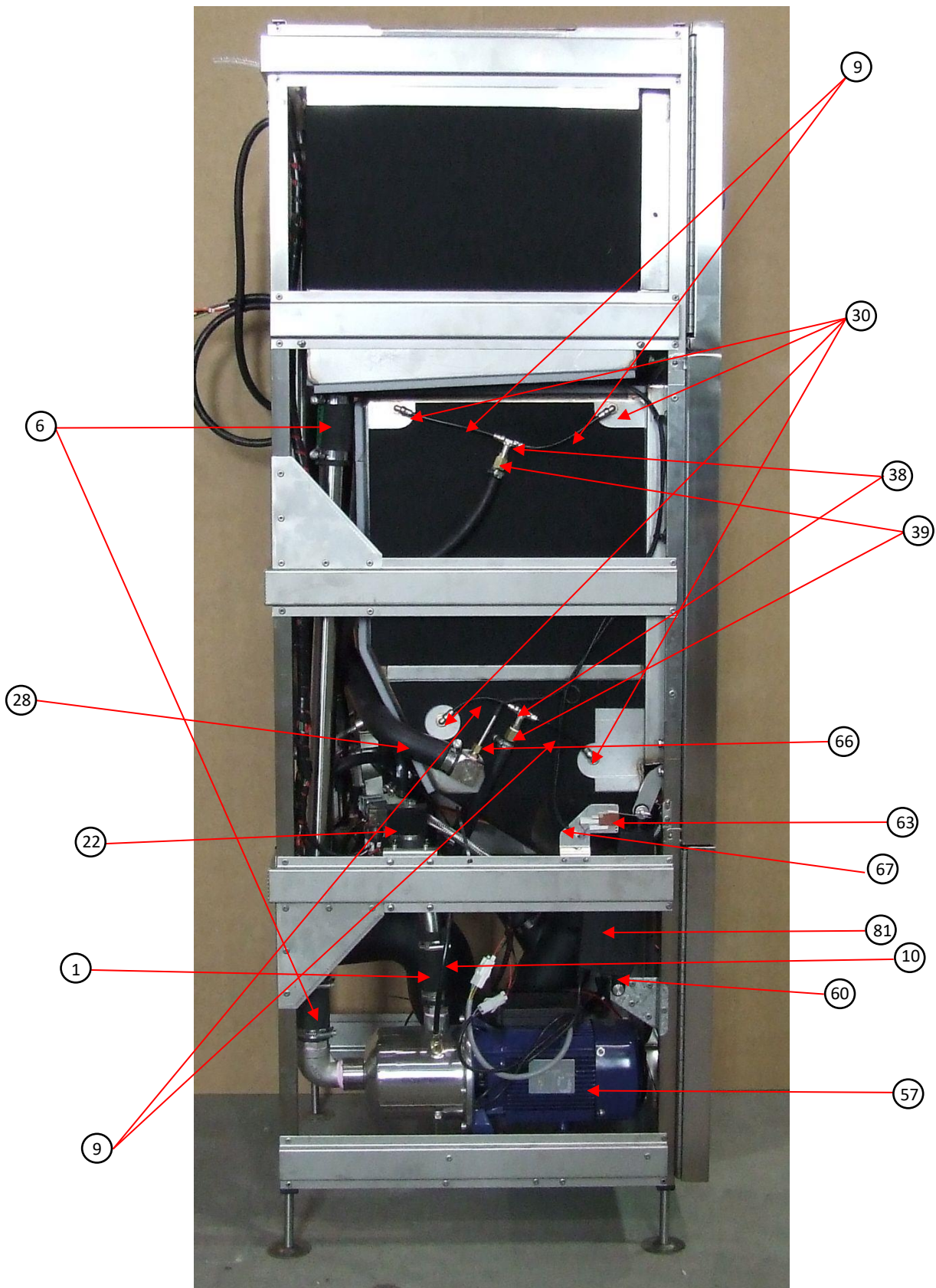
Text and illustration © Copyright MALMET (AUSTRALIA) 2024

All rights reserved. No part of this document may be reproduced or transmitted in any form or by any means, electronic or mechanical, including photocopying, recording or by an information storage and retrieval system, without prior permission in writing from Malmét (Australia)

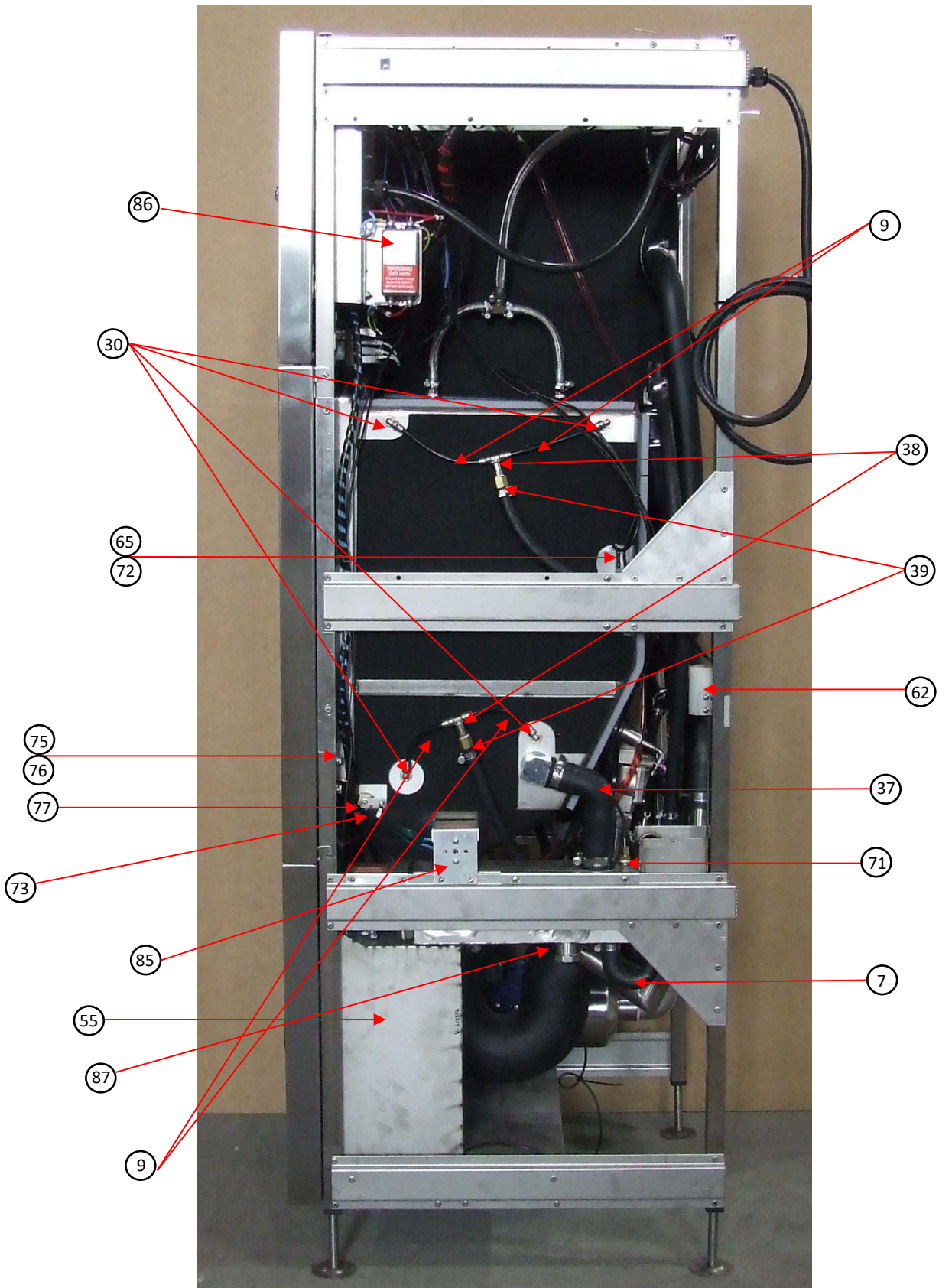
Layout – Front View



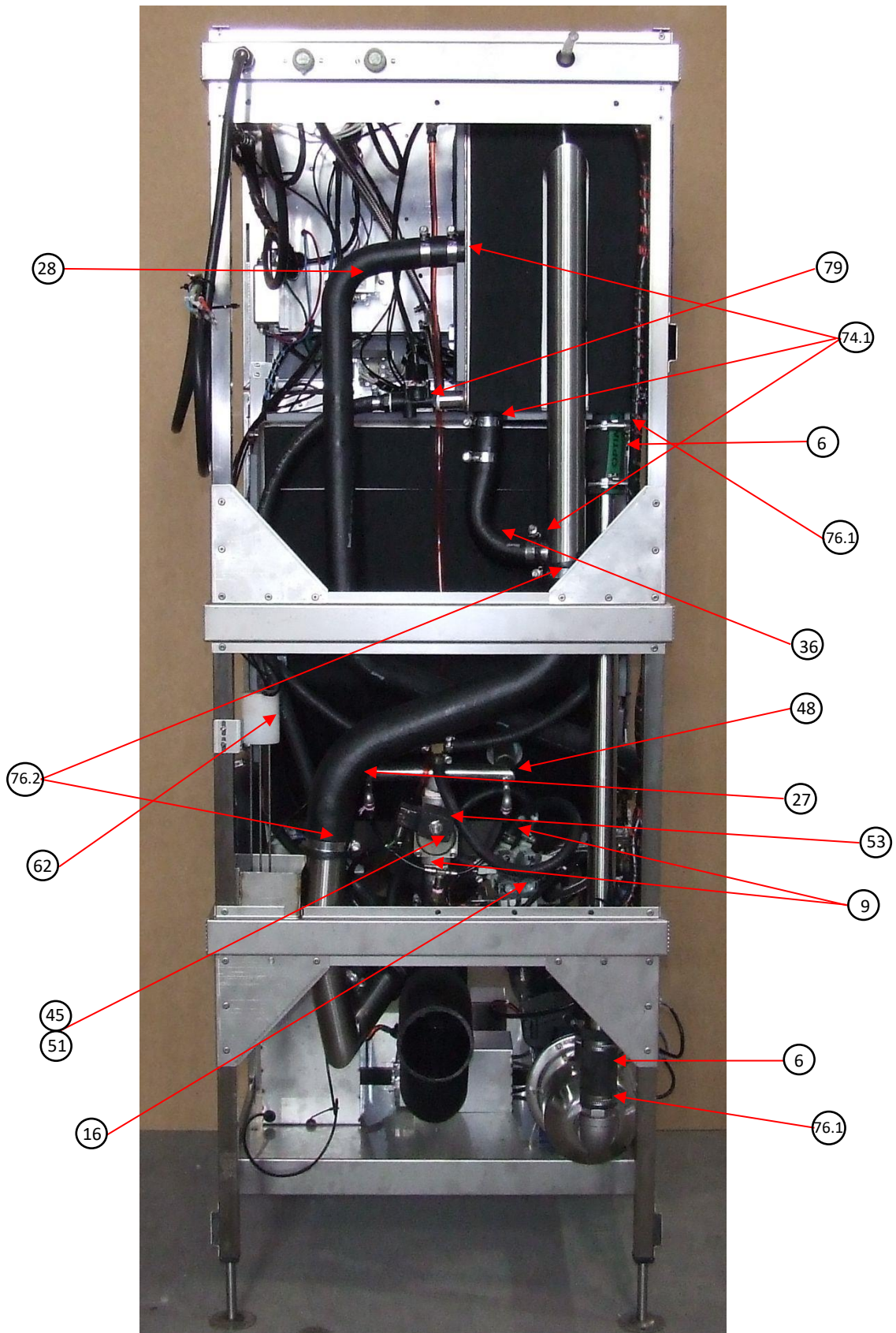
Layout – LH Side View



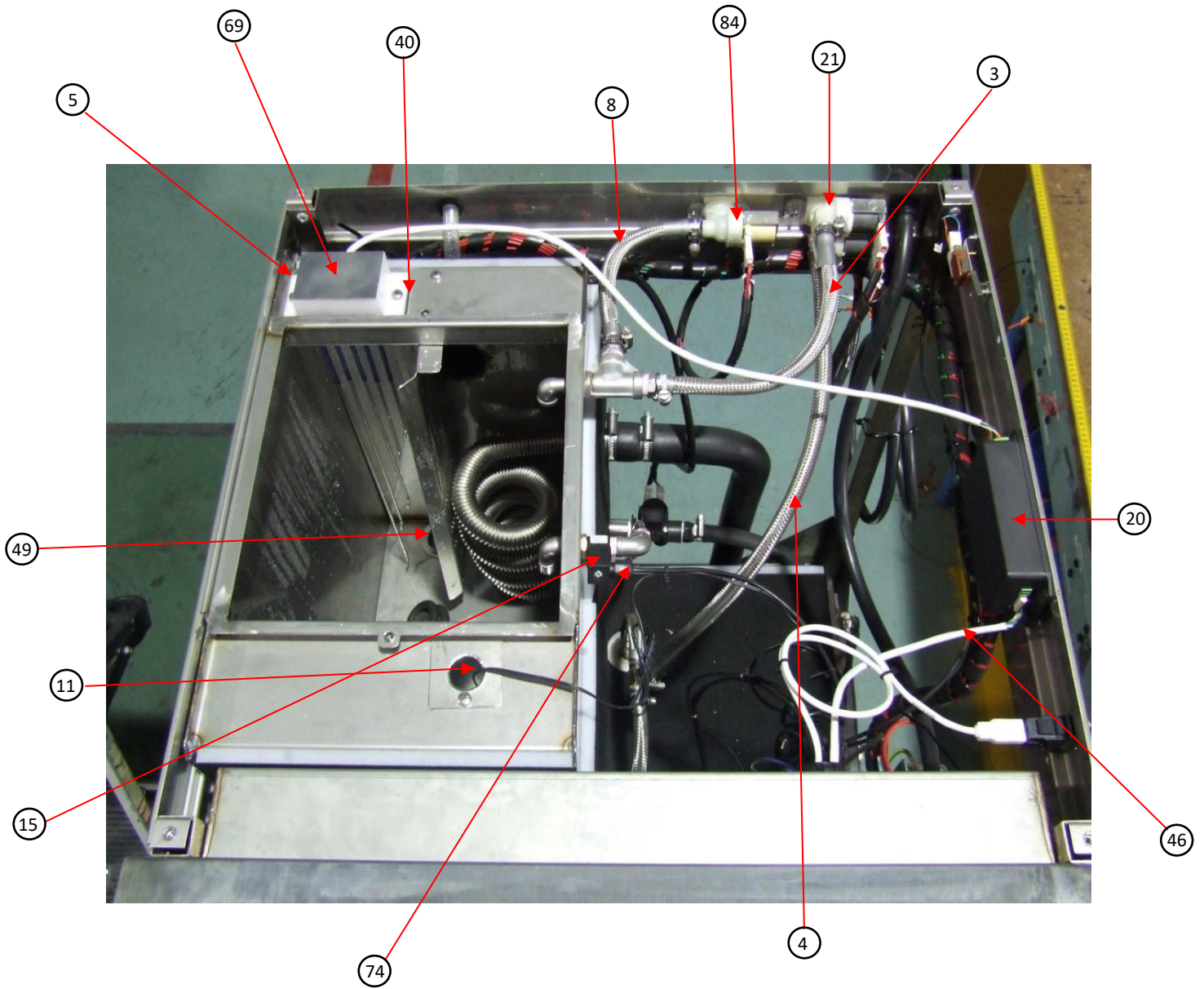
Layout – RH Side View



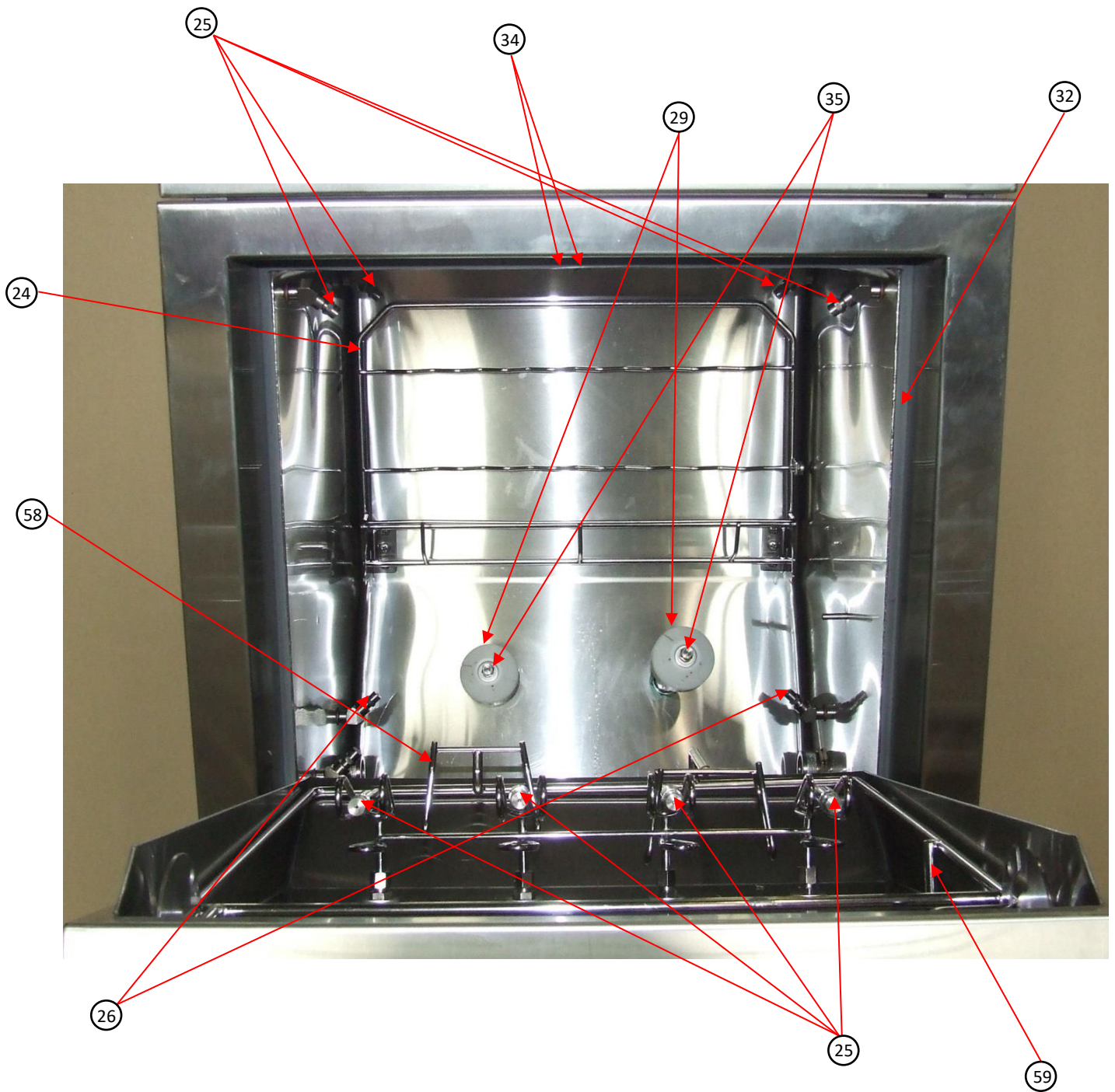
Layout – Rear View



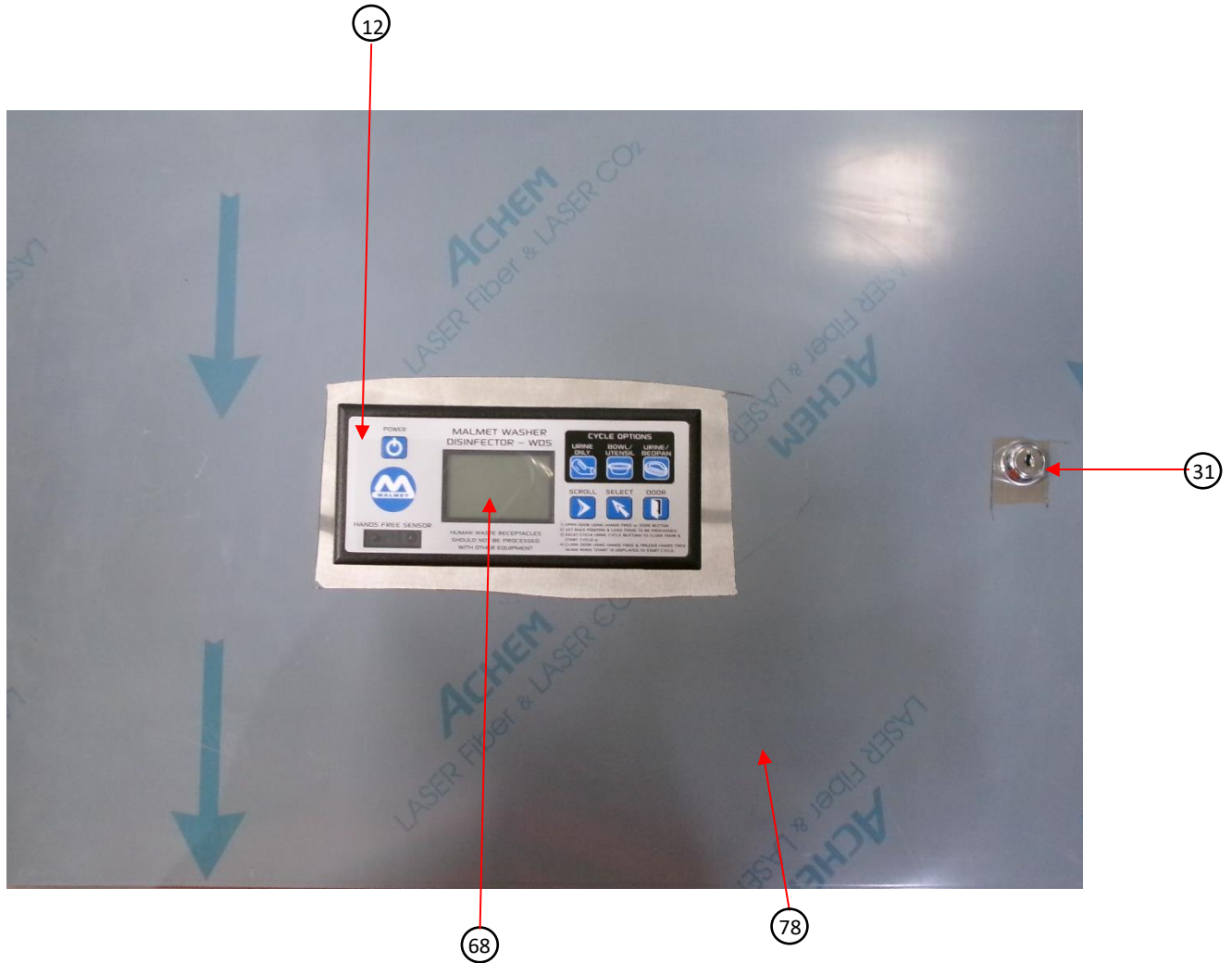
Layout – Top View



Layout – Inside Door View



Control Panel – Front View



Spare Parts Catalogue



| # | Part Number | Description | Diagram | # | Part Number | Description | Diagram |
|----|-------------|---|---|----|-------------|--|--|
| 2 | 92-4003SP | WDS FASCIA ASSEMBLY |  | | 92-2016SP | BRACKET – TOP DOOR SW CLOSE |  |
| 24 | 92-3031SP | RACK – BOWLS / UTENSILS |  | | 92-2251SP | DOOR MICRO SWITCH COVER |  |
| 48 | 92-4029SP | MANIFOLD WELD ASSEMBLY |  | | 92-5235 | UTENSIL BASKET - 465MM X 265MM X 115MM (SUITABLE FOR ALL WDS) ACCESSORY |  |
| 56 | 92-4036SP | AXLE BAR ASSEMBLY |  | | 92-5245 | WDS 1L JUG RACK ACCESSORY |  |
| 58 | 92-4052SP | RACK BEDPAN ASSEMBLY INCLUDES HINGES, SENSOR MAGNET, RACK, SPRING & SCREWS |  | 39 | 92-3083SP | TAIL 3/8" HOSE 1/4" BSP FEMALE |  |
| | 92-5033 | KIDNEY DISH RACK ACCESSORY |  | | 91-2028SP | TRAP 'S' ROTA MOULDED |  |
| 30 | 92-3078SP | RAPIDFIT ELBOW 6MM TO 1/8" BSP |  | | 91-2029SP | TRAP 'P' ROTA MOULDED |  |
| 32 | 92-3113SP | GASKET DOOR SEAL – CHAMBER |  | | 92-2135SP | Min 8x WASHER 17.5OD X 10ID SS 316 MIN ORDER QTY 8 |  |
| 38 | 91-3035SP | SPRAY 'T' PRESS LOCK FITTING |  | 59 | 92-4055SP | MAGNET RACK POSITION SENSOR ASSEMBLY |  |



Spare Parts Catalogue

| # | Part Number | Description | Diagram | # | Part Number | Description | Diagram |
|----|-------------|---|---------|----|-------------|--|---------|
| 60 | 92-4069SP | DOOR ACTUATOR FASTENERS | | | 92-3099SP | Min 8x SCREW M6X12 P/P M/T 316 SS MIN ORDER QTY 8 | |
| 75 | 92-4142SP | DOOR HINGE ASSEMBLY | | | 92-3106SP | Min 10x SCREW M5X10 P/HEAD 316 SS MIN ORDER QTY 10 | |
| 76 | 92-4247SP | DOOR HINGE BOLT PLATE ASSEMBLY | | | 92-3188SP | Min 10x SETSCREW M6X25MM HEX HEAD SS 316 MIN ORDER QTY 10 | |
| 79 | 91-3068SP | WATER SOLENOID VALVE 3/8" | | | 92-3198SP | Min 2x COLLAR 16MM ID MIN ORDER QTY 2 | |
| 7 | 91-3170SP | HOSE – HOSE BEND 180 RUBBER | | | 92-2137SP | Min 8x WASHER 17.50D X 10ID COPPER MIN ORDER QTY 8 | |
| 62 | 91-3114SP | HOT WATER LEVEL PROBE (3 WAY) | | 85 | 91-3059SP | ELEMENT OVERTEMP SWITCH 115°C | |
| 71 | 81-2405SP | TEMPERATURE PROBE; NUT & 1/4" BRASS OLIVE | | | 92-2058SP | STEAM GENERATOR LID | |
| 87 | 92-4022SP | STEAM GENERATOR ASSEMBLY WDS | | 57 | 92-4044SP | WDS PUMP ASSEMBLY DW4-40/075D PUMP | |
| | 92-4141SP | PUMP OUTLET TO MANIFOLD CONNECTION ASSEMBLY | | | 92-3114SP | 1/8" BSP 45° F-F ELBOW (SS 316) | |
| 43 | 92-3153SP | ELEMENT OVER TEMP SWITCH 100°C | | | | | |



| # | Part Number | Description | Diagram | # | Part Number | Description | Diagram |
|----|-------------|--|---|----|-------------|---|---|
| 5 | 92-2144SP | CLAMP PLATE 5 LEVEL PROBE |  | 49 | 92-4042SP | WATER TANK SCREEN ASSEMBLY |  |
| 11 | 82-2261SP | HARNESS 2 (HOT TANK SENSOR) |  | 69 | 92-4075SP | 5 LEVEL PROBE ASSEMBLY |  |
| 40 | 92-3115SP | GASKET – 5 LEVEL PROBE |  | 42 | 91-3040SP | HEATING ELEMENT 4.5kW WDS 1 PH ONLY |  |
| 42 | 92-3128SP | ELEMENT 7.2kW 240V 3ph WDS 3 PH ONLY |  | 51 | 92-3156SP | SEAL KIT RK-S35-6-E TO SUIT 92-3015SP 1" SOLENOID VALVE |  |
| 16 | 92-3013SP | SPRAY SOLENOID 4 WAY |  | 53 | 92-3245SP | 1" SOLENOID VALVE 2WB-25S-V DIRECT ACTING (Kailing) |  |
| 21 | 92-3012SP | COLD WATER INLET SOLENOID 2 WAY |  | 84 | 81-2099SP | WDT/WDS - HOT WATER INLET SOLENOID 1 WAY |  |
| 22 | 92-3014SP | WATER SOLENOID VALVE 1/2" BSP |  | 34 | 92-3047SP | SPRAY NOZZLE COOL DOWN WL1 1/4" 120° |  |
| 45 | 92-3234SP | SEAL KIT RK-ES55-6-N TO SUIT 92-3233 VALVE |  | 35 | 92-3049SP | NOZZLE WL1/2 120 1/8BSP M 316 SS |  |
| 25 | 92-3046SP | SPRAY NOZZLE TOP WL1/4 90° |  | 26 | 92-3048SP | SPRAY NOZZLE BOTTOM WL1/2 60° |  |



Spare Parts Catalogue

| # | Part Number | Description | Diagram | # | Part Number | Description | Diagram |
|------|-------------|---|---|------|-------------|---|---|
| 29 | 92-3063SP | FLUSH NOZZLE - ROTARY |  | | 1-30-235SP | Min 10x WASHER FLAT SS 3/8" MIN ORDER QTY 10 |  |
| 1 | 92-2274SP | HOSE, RUBBER 1¼" – 32MM (135MM LONG) |  | | 92-4014SP | BOTTLE HOLDER ('WDS' SERIES) |  |
| 3 | 92-2100SP | HOSE – COLD WATER INTO TANK |  | 27 | 92-3058SP | HOSE – TANK OVERFLOW |  |
| 4 | 92-2102SP | HOSE – COOLDOWN H1 |  | 28 | 92-3060SP | HOSE – CHAMBER TO STEAMCOIL |  |
| 6 | 92-2239SP | JOINER HOSE 38ID X 100MM |  | 36 | 92-3059SP | HOSE – STEAM COIL TO OVERFLOW |  |
| 8 | 92-2101SP | HOSE – HOT WATER INTO TANK |  | 37 | 92-3061SP | HOSE – STEAM GENERATOR TO CHAMBER |  |
| 9 | 92-2109SP | Min 2x HOSE – TOP SPRAYS H3 MIN ORDER QTY 2 |  | | 92-2104SP | HOSE – URINE BOTTLES |  |
| 10 | 92-2113SP | HOSE – PUMP DRAIN H1 |  | | 92-2272SP | HOSE, RUBBER 1¼" – 32MM (65MM LONG) |  |
| 74.1 | 8-5835SP | Min 5x SS HOSE CLAMP 25-40mm MIN ORDER QTY 5 |  | 76.1 | 8-5837SP | Min 5x SS HOSE CLAMP 35-50mm MIN ORDER QTY 5 |  |



Spare Parts Catalogue

| # | Part Number | Description | Diagram | # | Part Number | Description | Diagram |
|------|--|--|---|----|-------------|---|---|
| 76.2 | 8-5840SP | Min 5x SS HOSE CLAMP 50-70mm MIN ORDER QTY 5 |  | 44 | 92-3228SP | FUSE 5A (TIME DELAY) |  |
| 13 | 92-3004SP | HEATER SWITCH MODULE (D134413) |  | 46 | 92-3503SP | HARNESS – CONDUCTIVITY TO PCB |  |
| 14 | 92-3006SP ***ATTN *** FURTHER ACTION REQUIRED AT TIME OF ORDER | PROCESSOR MODULE (D13447) PROGRAMMED TO ORDER. SOFTWARE VERSION REQ. REF MWI 7.5-011 |  | 47 | 92-3528SP | HARNESS – CONTROL TO HEATERS |  |
| 17 | 92-3017SP | CIRCUIT BREAKER 1 PH, 20 AMP |  | 52 | 92-3200SP | BATTERY COIN CELL (CR2032) |  |
| 19 | 92-3005SP | CONTROL MODULE (D134412) |  | 54 | 92-3527SP | HARNESS – CONTROL TO DISPLAY |  |
| 20 | 92-3007SP | CONDUCTIVITY MODULE (D134418) |  | 63 | 92-4080SP | DOOR BOTTOM SWITCH ASSEMBLY (J11) |  |
| 23 | 92-3018SP | CIRCUIT BREAKER 1 PH, 10 AMP, 6KA |  | 65 | 92-4089SP | PAN RACK SENSOR SW ASSEMBLY |  |
| 33 | 92-3126SP | CIRCUIT BREAKER 3 PH, 20 AMP, 6KA C |  | 41 | 92-3127SP | CONTACTOR MC-18B- 240VAC 7.5KW |  |
| 66 | 91-3130SP | TEMPERATURE PROBE - DUPLEX THERMISTORS |  | 77 | 92-4149SP | BLOCKAGE SENSOR ASSEMBLY 12m x 20mm |  |











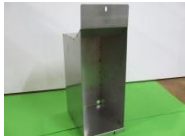


Spare Parts Catalogue

| # | Part Number | Description | Diagram | # | Part Number | Description | Diagram |
|----|-------------|-------------------------------------|---------|----|-------------|-------------------------------------|---------|
| 67 | 92-4094SP | HARNESS – DOOR BOTTOM SWJ11 | | 81 | 91-4086SP | DOOR ACTUATOR ASSEMBLY | |
| 70 | 92-4079SP | DOOR TOP SWJ10 CLOSE MOUNT ASSEMBLY | | | 92-4077SP | LOAD CELL ASSEMBLY | |
| 72 | 92-4087SP | BOWL RACK SENSOR SW ASSEMBLY | | | 92-4093SP | HARNESS – DOOR TOP SWJ10 ASSEMBLY | |
| 73 | 92-4091SP | HARNESS – BLOCKAGE SENSOR ASSEMBLY | | | 92-4095SP | HARNESS – LOCKOUT SWITCHES ASSEMBLY | |
| 86 | 92-3144SP | POWER LINE RFI FILTER | | 86 | 92-3244SP | EMI FILTER PE | |
| | 92-2044SP | TOP PANEL | | 78 | 92-5017SP | CONTROL PANEL SUB ASSEMBLY | |
| | 92-2042SP | L/H SIDE PANEL | | | 92-2043SP | R/H SIDE PANEL | |
| | 92-2039SP | BACK PANEL | | 82 | 92-3141SP | SWITCH PUSH BUTTON RED | |



Spare Parts Catalogue

| # | Part Number | Description | Diagram | # | Part Number | Description | Diagram |
|----|-------------|---------------------------------|---|----|-------------|------------------------------------|---|
| 31 | 92-3103SP | CAMLOCK NX11RKA-180 COMM KEY |  | 83 | 92-3142SP | SWITCH CONTACT BLOCK |  |
| 68 | 92-4070SP | CONTROL DISPLAY ASSEMBLY |  | 12 | 92-3002SP | DECAL FACIA |  |
| 15 | 92-3011SP | DETERGENT FLOW SENSOR |  | 61 | 92-4076SP | LOAD CELL MOUNT ASSEMBLY |  |
| 80 | 92-4058SP | DETERGENT PUMP ASSEMBLY |  | 50 | 92-4047SP | DETERGENT BOTTLE LINE SUB ASSEMBLY |  |
| 74 | 92-4104SP | HARNESS – DETERGENT FLOW SENSOR |  | | 92-2050SP | DETERGENT DOOR ACCESS |  |
| 55 | 92-4014SP | BOTTLE HOLDER ('WDS' SERIES) |  | | | | |



Manufactured by
Malmart (Australia)
ABN 95 001 717 791